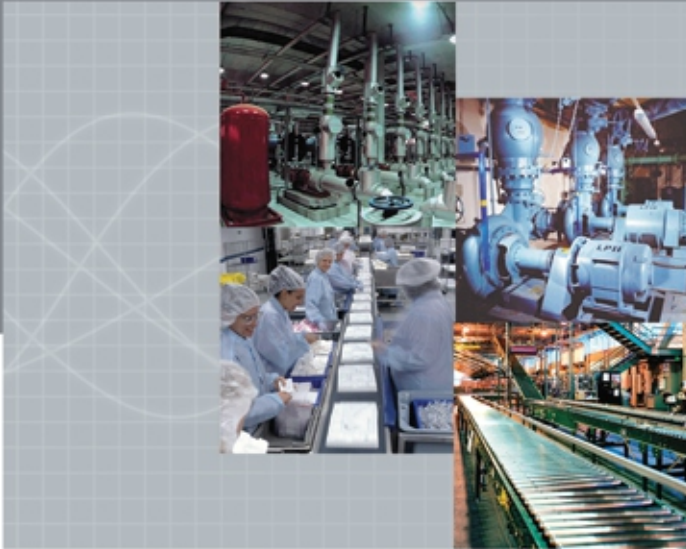


Simply Smart



PROGRAMMABLE LOGIC RELAY



BCH ELECTRIC LIMITED

General Technical Specification

Supply Voltage	AC 100V-240V /DC 12-24V	Protection class	IP20
Output Current	Relay 10A Transistor 2A	Environment temp	0-55° C
Program Capability	128 Blocks	Storage temp	-40 to 70° C
Timer/Counter	128 Nos	Relative humidity	5% to 95% non-condensing
RTC Switches	128 Nos	Vibration	0.15mm Length (at 10 to 57Hz)
Maximum I/O	82	Surge Pulse	2kv Power line 2kv Signal line
LCD Display	4 X 10 Characters 64 pages		

Super Relay Function



Extention Function

SR series products have 20 I/O extension module, can be extended to 82 I/O (50 inputs and 32 outputs).



Remote Control

Industrial wireless remote control module, offer 6 wireless remote control input points.



Voice Function

Telephone alarm automatically. The voice message and telephone number can be changed via the super HMI by the user.



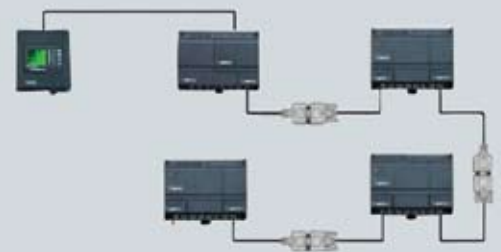
HMI Function

Removable LCD (act as HMI), with a separate installation mounting rack, can be easily mounted on the panel of cabinet, display alarm message and real value, the user can change the preset value via the LCD.



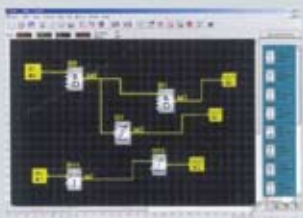
Separate Installation

The user can install the SR inside the cabinet and mount the HMI (LCD) on the front panel of the cabinet.



Flexible connection

SR CPU module can be connected to extension modules, voice module and remote control module via a communication cable to prolong the installation distance.



Programming

Friendly programming software (Super CAD) which can be used very easily, offer the super simulation function.



Selection Guide

Type	Power	Input	Output	Remarks
SR - 12 MRAC	AC 100- 240V	8 points AC input	4 points relay output	With real-time clock
SR - 12 MRDC	DC 12- 24 V	8 points DC input	4 points relay output	With real-time clock
SR - 12 MTDC	DC 12- 24 V	8 points DC input	4 points transistor output	With real-time clock
SR - 22 MRAC	AC 100- 240V	14 points AC input	8 points relay output	With real-time clock
SR - 22 MRDC	DC 12- 24 V	14 points DC input	8 points relay output	With real-time clock
SR - 22 MTDC	DC 12- 24 V	14 points DC input	8 points NPN transistor output	With real-time clock
SR - 20 ERA	AC 100- 240V	12 points AC input	8 points relay output	20 points extended module
SR - 20 ERD	DC 12- 24 V	12 points DC input	8 points relay output	
SR - 20 ETD	DC 12- 24 V	12 points DC input	8 points NPN transistor output	
SR - VPA	AC 100- 240V	Voice module, auto-dialing alarming telephone and remote control by telephone		
SR - VPD	DC 12- 24 V			
SR - RCA	AC 100- 240V	Remote control receiving module		
SR - RCD	DC 12- 24 V			
SR - TC	3VDC (two units of No. 5 batteries)		Remote control transmitter	
SR - HMI	Display alarm message and current value/change preset value			
SR - CBA	AC type	Connectng bridge, to connect the main machine and the external expanded model		
SR - CBD	DC type			
SR - CP	Communication cable between SR and PC for programming and monitoring			
SR - PC	The cover			
SR- ECBA	AC type (one on each side)	To remotely connect the machine and the extended module		
SR - ECBD	DC type (one on each side)			
SR - EHC	Connection set of SR-HMI Remotely connect SR machine and SR-HMI to place the SR machine inside the cabinet and put the SR-HMI out the case for observation and operation			
SR - LC	Cover for the communication port. (If using SR-CBA or SR-CBD, it is no need to used this cover). (one on each side).			
SR - EANT	Prolong connecting antenna of SR-RCA/SR-RCD			
SR-AUD	The Cable between the sound card and the SR-VPA/SR-VPD for voice recording from PC			
SR - WRT	Programming Panel			
SR - CMT	Front-putting Communication Machine			

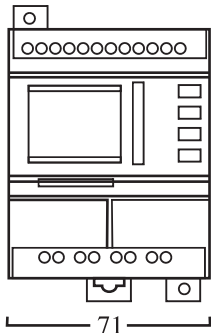
CPU	EXTENSION	PROGRAMMING	LCD PANEL	REMOTE CONTROL	ACCESSORIES
 12 I/O	 20 I/O	 Super Cad Software	 HMI	 Remote Extension	 Connecting Bridge
 22 I/O	 Voice	 Programming Cable	 WRT	 Remote	 Remote Connection Cable
	 Remote Extension		 Blank Cover	 Antenna	 Communication port cover

Applications

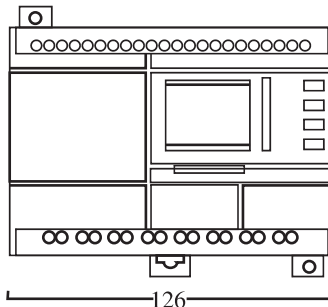
- Pump/Fan controls
- HVAC Applications
- Packaging & material handling
- Machine controls
- Commercial light controls
- Agricultural
- Conveyor/Diverter controls
- Timing/Counting logic control
- Temp/Pressure/Level on/off controls.
- Traffic Light controls.
- Water treatment sequence controls.

And many more

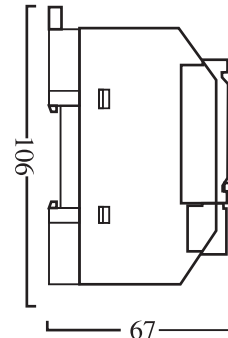
Installation Dimension



SR - 12 Series (mm)



SR-22 Series (mm)/SR-20 ERA (mm)
SR-20 ERD (mm)/SR-20 ETD (mm)



BCH ELECTRIC LIMITED

Visit us at : www.bchindia.com

Corporate Office : 1105, New Delhi House, 27, Barakhamba Road, New Delhi-110 001 Tel. : 91-11-23316029/3610/6539/43673100 Fax : 91-11-23715247 E-mail : marketing@bchindia.com

Registered Office : Block 1E, 216, Acharya Jagadish Chandra Bose Road, Kolkata - 700 017 CIN : U31103WB1965PLC026427

Works 1 : 20/4, Mathura Road, Faridabad-121 006 (Haryana) Tel. : 0129-4063000/4293000 Fax : 0129-2304016

Works 2 : 64-68, Sector-7, IIE, Pant Nagar, Rudrapur, Udham Singh Nagar - 263 153 (Uttarakhand) Tel. : 05944-250214/16 Fax : 05944-250215

Sales Offices :

Ahmedabad

93, City Centre,
Near Swastik Char Rasta,
C.G. Road, Navrangpura,
Ahmedabad-380 009
Tel. : 079-26565719/40074482
Fax : 079-26565719
E-mail : ahmedabad@bchindia.com

Bangalore

B.M.H. Complex, 2nd Floor,
No. 22, Kengal Hanumanthiah Road,
Bangalore - 560 027
Tel. : 080-22273478/41144878/41144879
Fax : 080-22236759
E-mail : bangalore@bchindia.com

Chandigarh

SCO 121-22-23, 1st Floor,
Sector 34-A, Chandigarh - 160 022
Tel. : 0172-5078957/2666122
Fax : 0172-5049905
E-mail : chandigarh@bchindia.com

Chennai

Flat No. 3A, 3rd Floor,
Sree Apartments,
No.508, TTK Road,
Alwarpet, Chennai 600 018
Tel. : 044-24337046, 24337047
Fax : 044-24337047
E-mail : chennai@bchindia.com

Coimbatore

87, Dr. Nanjappa Road,
Coimbatore - 641 018
Tel. : 0422-2305311
Fax : 0422-2302599
E-mail : coimbatore@bchindia.com

Faridabad

20/4, Mathura Road,
Faridabad - 121 006 (Haryana)
Tel. : 0129-2304016
E-mail : faridabad@bchindia.com

Hyderabad

1-8-303/48/13/102, Arya One,
2nd Floor, P. G. Road,
Secunderabad - 500 003
Tel. : 040-66206263/27890306
Fax : 040-66207273
E-mail : hyderabad@bchindia.com

Indore

330-331, Indraprastha Tower,
3rd Floor, 6, M.G. Road,
Indore - 452 001
Tel. : 0731-2510011
Fax : 0731-2510012
E-mail : indore@bchindia.com

Jaipur

25, Hathroi, Gopalbari,
Jaipur - 302 001
Tel. : 0141-5104521
Fax : 0141-2363521
E-mail : jaipur@bchindia.com

Jamshedpur

3rd Floor, Aastha Trade Centre,
'Q' Road, Bistupur,
Jamshedpur - 831 001
Tel. : 0657-2756171/2756157
E-mail : jamshedpur@bchindia.com

Kolkata

1st Floor, Block 1E,
216, A.J.C. Bose Road,
Kolkata - 700 017
Tel. : 033-22800888-22871728
E-mail : kolkata@bchindia.com

Lucknow

Madan Plaza, 3rd Floor,
14, Station Road,
Lucknow - 226 001
Tel. : 0522-4025597/4025997
Fax : 0522-4025697
E-mail : lucknow@bchindia.com

Ludhiana

S.C.O.-18, 2nd Floor,
Feroze Gandhi Market,
Ludhiana - 140 001
Tel. : 0161-5021807/5022808
Fax : 0161-5021807
E-mail : ludhiana@bchindia.com

Mumbai

A-151, Mittal Tower,
Nariman Point,
Mumbai - 400 021
Tel. : 022-22822947/22826039
Fax : 022-22822858
E-mail : mumbai@bchindia.com

New Delhi

801, Akash Deep Building,
26A, Barakhamba Road,
New Delhi - 110 001
Tel. : 011-23313878/66307065
Fax : 011-23739230
E-mail : delhi@bchindia.com

Pune

8, Sarosh Bhavan,
16-B/1, Dr. Ambedkar Road,
Pune - 411 001
Tel. : 020-26052590
Telefax : 020-26135224
E-mail : pune@bchindia.com

Raipur

2nd Floor, Building No. B-234,
Indira Gandhi Vyvasayik Parisar,
Pandri, Raipur - 492 004
Tel. : 0771-4020213
Fax : 0771-2582680
E-mail : raipur@bchindia.com

Trichy

Kingstone Park, 2nd Floor,
19/1, Puthur High Road,
Ramalinga Nagar,
Trichy - 620 017
Tel. : 0431-4040497
E-mail : trichy@bchindia.com

Vadodara

301, Third Floor, "Florence Classic",
10, Ashapuri Co-Op. Hsg. Soc. Ltd., Opp. VUDA Housing,
Near Cow Circle, Akota, Vadodara - 390 020
Tel. : +91-265-6548444/2345068/2345069
Telefax : 0265-2345068,
E-mail : vadodara@bchindia.com

Other Branch Locations

Bhubaneswar : bhubaneswar@bchindia.com, **Cochin :** cochin@bchindia.com, **Dehradun :** dehradun@bchindia.com, **Gurgaon :** gurgaon@bchindia.com, **Guwahati :** guwahati@bchindia.com,
Hospet : hospet@bchindia.com, **Hubli :** hubli@bchindia.com, **Madurai :** madurai@bchindia.com, **Vishakhapatnam :** vizag@bchindia.com

Resident Engineer Locations

Baddi	Gurgaon	Madurai	Salem
Bardhaman	Haridwar	Muzaffarnagar	Udaipur
Bhilai	Hubli	Nashik	Vapi
Bhubaneswar	Hospet	Patna	Vishakhapatnam
Cochin	Jodhpur	Puducherry	Warangal